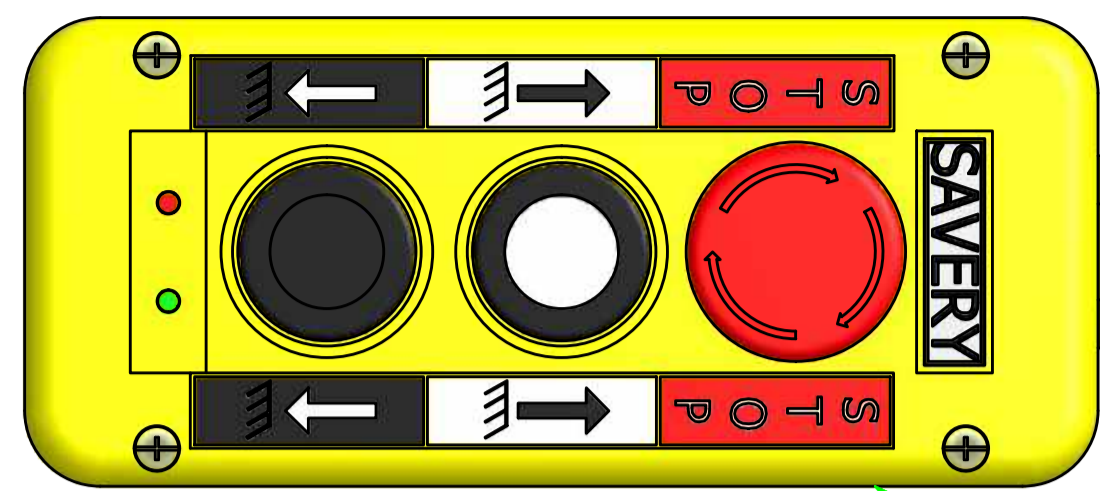


NOTE

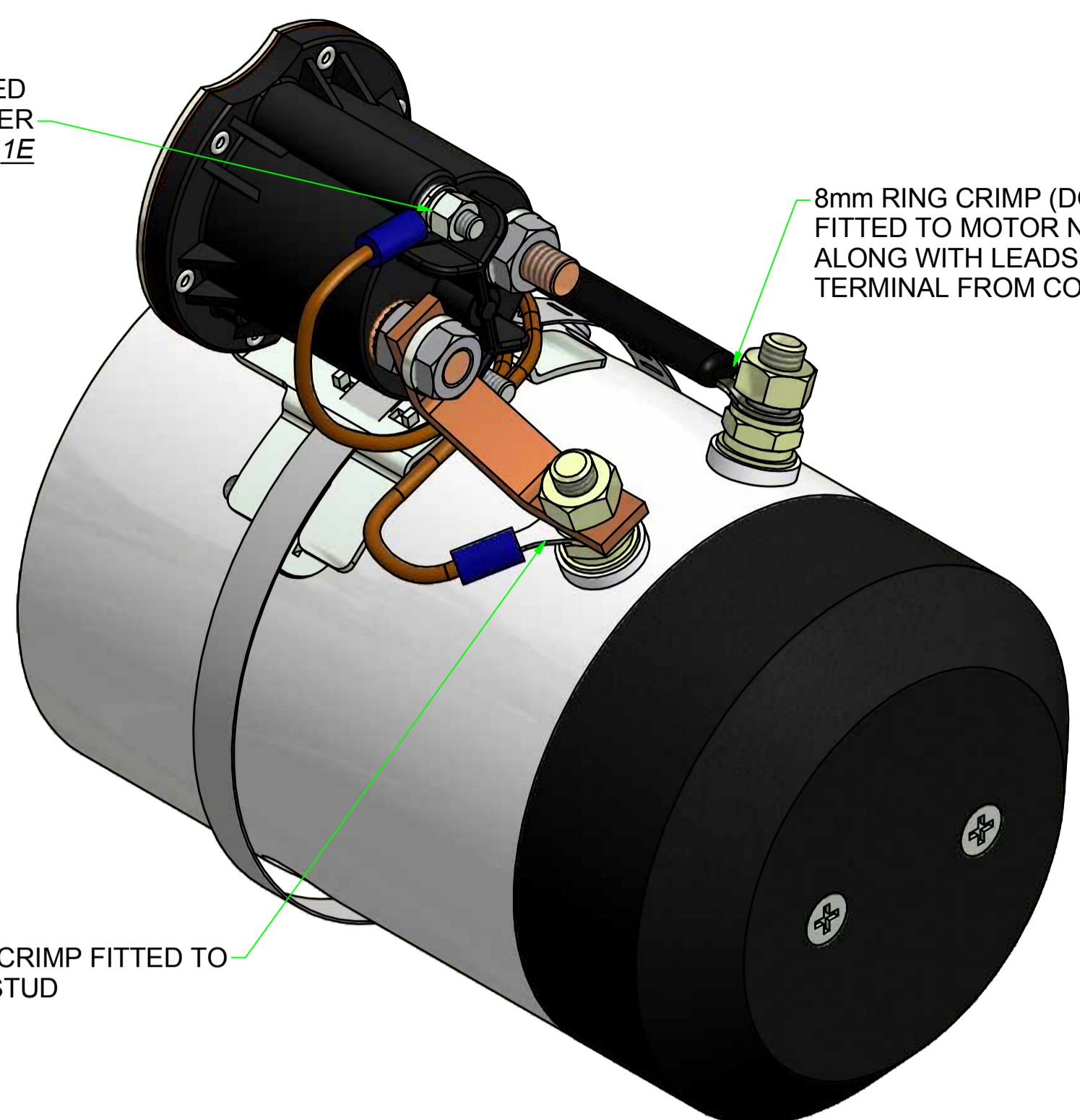
REFERENCES IN *UNDERLINED ITALICS> ARE WIRE END DESIGNATIONS FROM DRAWING 8109-26680*



ITEM 1 - 3 PUSH BUTTON CONTROLLER COMPLETE WITH COBO PLUG PART No. - 2377-27870-CP

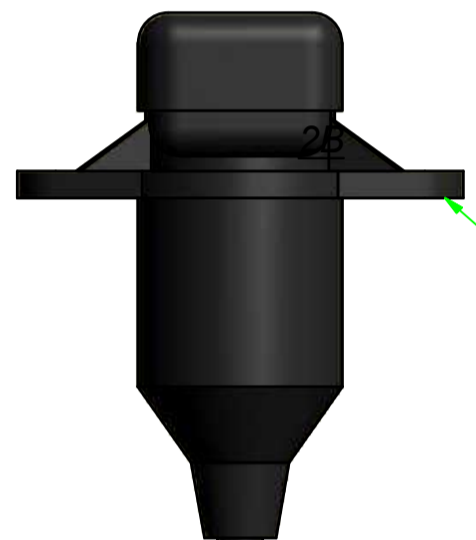
6mm RING CRIMP END FIXED TO FRONT STUD ON STARTER ALONG WITH WIRE 1E

8mm RING CRIMP (DOUBLE WIRE END) FITTED TO MOTOR NEGATIVE TERMINAL ALONG WITH LEADS 4C, 5C AND RING TERMINAL FROM COIL ASSEMBLY



8mm RING CRIMP FITTED TO POSITIVE STUD

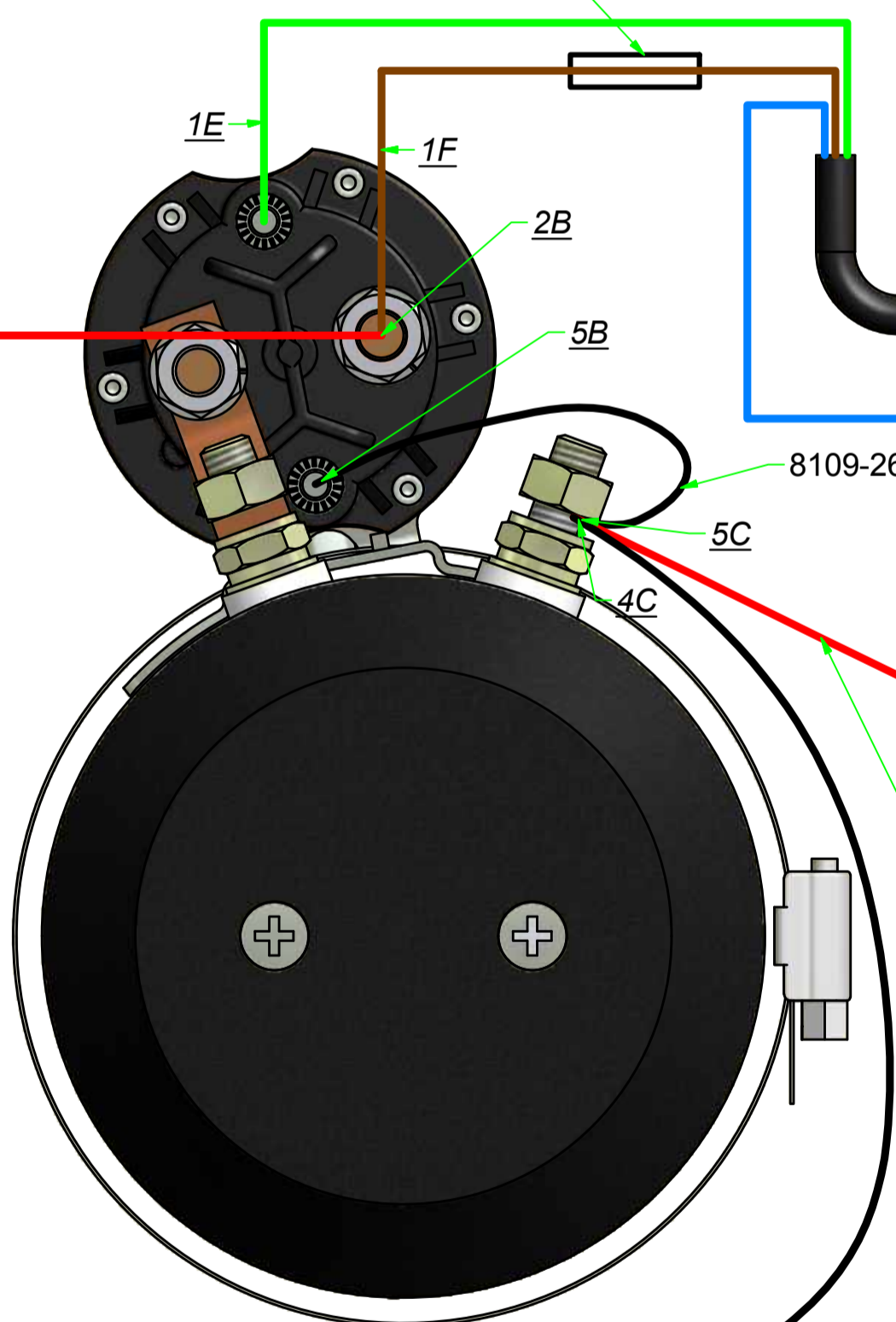
ISOMETRIC VIEW TO SHOW E-MARKING WIRE (8109-28061) CONNECTIONS



COBO SOCKET

NUT TORQUE VALUES		
SIZE	LOCATION	TORQUE (Nm)
M8	MOTOR	8-10
10-32 UNF	STARTER	3-4
5/16 UNF	STARTER	8-10

5A BLADE FUSE

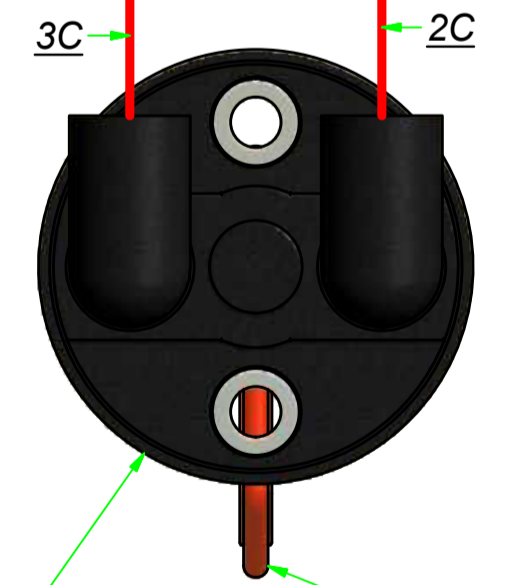


8109-26680 LEAD 2

8109-26680 LEAD 1 WITH COBO SOCKET CONNECTED

8109-26680 LEAD 5

CONNECT MALE BULLET ON COIL ASSEMBLY TO 1G ON LEAD 1



ITEM 3 - COBO ISOLATOR PART No. - 2377-2003 SUPPLIER REF - 13.006.000

KEY TO BE IN LOCKED POSITION AS SHOWN TO ENSURE CORRECT FITMENT OF CABLES.

CONNECT RING TERMINAL ON COIL ASSEMBLY TO NEGATIVE MOTOR STUD

COIL ASSEMBLY 8109-28251 SEE DRG 28251

NOTE: PASS WIRES THRO HOLE IN MOTOR COVER BEFORE FIXING TO MOTOR AND STARTER

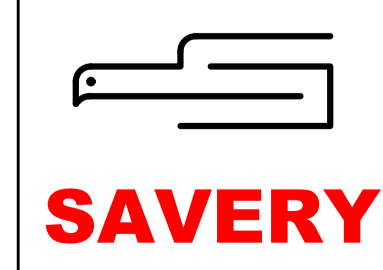
8109-26680 LEAD 3

8109-26680 LEAD 4

BATTERY

REVISION HISTORY			
REV	DESCRIPTION	DATE	APPROVED
2	PRODUCTION ISSUE	16/07/2013	E. GOLDING
2	MR 105312	03/09/2013	S.PAPPS

MATERIAL AS COMPONENTS	FINISH AS COMPONENTS	IF IN DOUBT ASK A1	DIMENSIONS IN MILLIMETRES TOLERANCES UNLESS OTHERWISE STATED	
			MILLING TOLERANCES UP TO 180 +0.08 180 TO 315 +0.10 315 TO 1000 +0.15 OVER 1000 +0.15	MACHINING TOLERANCES UP TO 50 +0.16 50 TO 120 +0.22 120 TO 315 +0.32 315 TO 1000 +0.56 OVER 1000 +0.90
		SCALE N.T.S.	FABRICATION TOLERANCES UP TO 100 ±1.0 100 TO 1000 ±2.0 1000 TO 2500 ±3.0 OVER 2500 ±4.0	



DRN S.PAPPS	DATE 29/08/2012	TITLE WIRING DIAGRAM
DRN L.SABIN	DATE 07/09/2012	
Dwg. No. 26537	Sheet No. 1 of 1	EDITION 2